

The 2127

Elevation B



3-4
BED



2.5-3
BATH



2-Car
GARAGE



2
FLOORS

Elevation C



Elevation D



The 2127



3-4
BED



2.5-3
BATH



2-Car
GARAGE



2
FLOORS



Lower Level

1 EFFORTLESS GARAGE

A dedicated storage zone keeps your necessities and hobbies organized, while a water heater nook provides plenty of parking clearance to reduce everyday friction. Check the variations page for other versions of this space.

2 SMARTER LIVING

The short distance between the garage entry, pantry, and kitchen minimizes the toll of carrying heavy groceries which can weigh dozens of pounds.

3 WELL-TAILORED

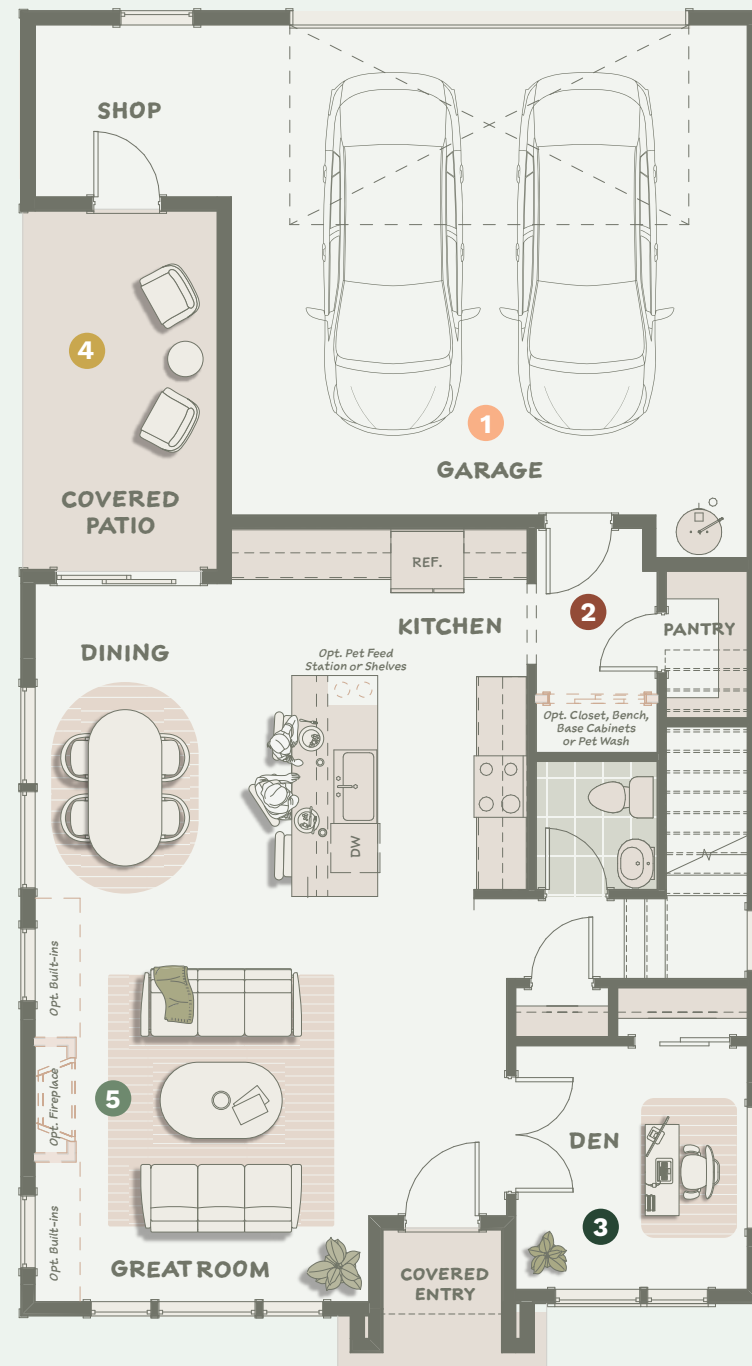
This versatile den can be tailored to your needs – use it as a playroom for kids, an office, or a guest room. Check the variations page for other versions of this space.

4 PEACEFUL OUTDOORS

Time outside can boost your well-being, and a covered patio allows you to enjoy the benefits year-round. The courtyard-style layout enhances privacy and provides protection from the wind during colder months.

5 BUILT FOR YOU

Plenty of options and variations throughout the home allow you to enjoy increased functionality and personalized design for your unique lifestyle. Ask your Sales Consultant for more details.



Upper Level



1 WELL-TAILORED

This spacious loft is the perfect place to work, study, or unwind. There's plenty of room for multiple homework stations, a home office, a cozy reading nook, a small library, or even a music practice area.

2 SLEEPING SOUNDLY

Flushing toilets, rumbling laundry machines, and the air handler have been strategically arranged to minimize contact with bedroom walls.

3 SPACIOUS EASE

This double-sided linen closet makes it easy to access what you need from either side. With plenty of shelving, it keeps your towels, sheets, and household essentials neatly organized and always within reach. It's a convenient, easy-to-use storage space that helps keep your home tidy and comfortable.

4 BLISSFUL SANCTUARY

This primary suite includes a 5-piece bath with natural light. The separate water closet adds privacy, while a walk-in closet with its own entrance allows for independent morning routines.

5 NATURAL BOOST

The positive impacts of natural light are many. Extra windows in spaces like the stairwell can make a difference in how your home feels day-to-day. A half wall at the loft also lets light flow through.

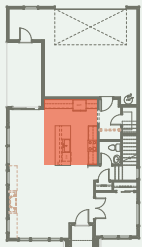
Renderings, floor plans, options, and variations on all pages are computer generated. Actual construction may vary. Pricing, dimensions, exteriors and specifications are subject to change, and depend on construction timelines. Ask your sales consultant for more information.

WHAT IS LIFEMADE?

Lifemade™ draws on real homeowner data and insights to guide every design and construction decision, ensuring that each home is thoughtfully crafted to be the happiest place in the world.

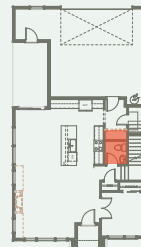
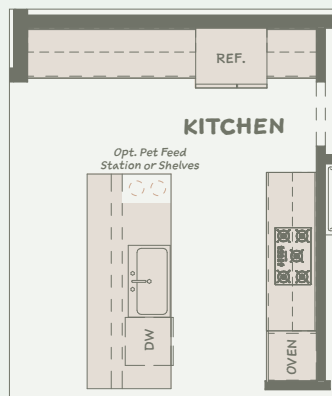
lifemade[™]
homes built for happiness[™]

Some homes feature alternate configurations that provide variety across each plan. Depending on construction progress, your home may already include some of these features. We'll help you explore what's available and guide you to a home that suits your needs and timeline.



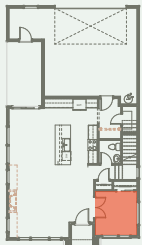
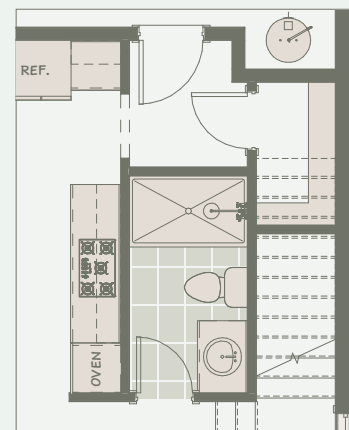
A CHEF'S KITCHEN

Gourmet Kitchen



ROOM FOR MORE

Full Bath on Main



ROOMS YOUR WAY

4th Bedroom in Lieu of Den

