

# The 1632



**3**  
BED



**2.5**  
BATH



**2-Car**  
GARAGE



**2**  
FLOORS

Elevation C



Elevation D



# The 1632



## Lower Level

### 1 ORGANIZED ENTRY

This mud room drop zone is designed to minimize clutter right where it starts, bringing peace to the rest of the home. With space to add your own bench, hooks, or storage pieces, it's easy to tailor it to your everyday routine. Ask your Sales Consultant for more details.

### 2 EFFORTLESS GARAGE

A water heater nook improves parking clearance to reduce everyday friction.

### 3 PURPOSEFUL SPACES

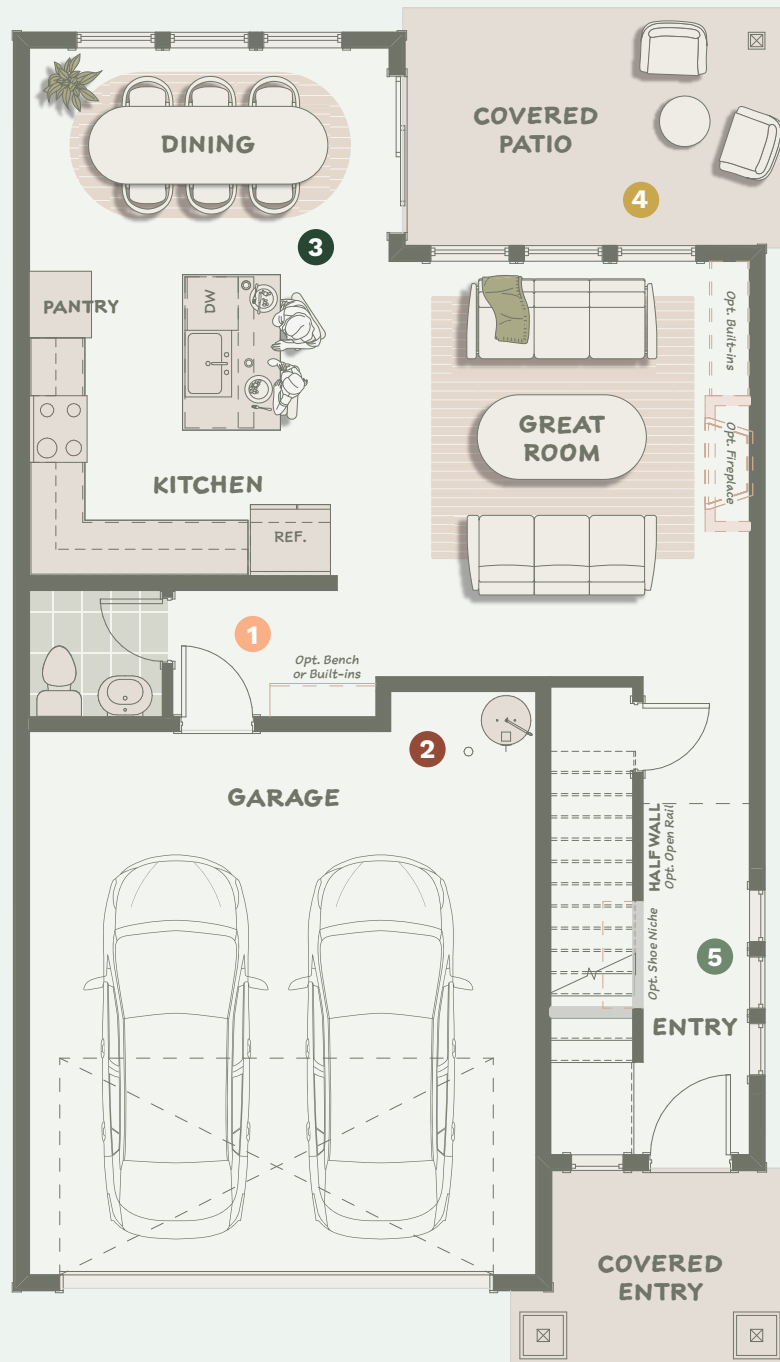
A defined dining space supports mindful meals with fewer distractions, while keeping a seamless connection to the kitchen. Extra width accommodates a larger table—perfect for hosting. With the slider just steps away, it's easy to extend the party outdoors for barbecues and indoor-outdoor gatherings.

### 4 PEACEFUL OUTDOORS

Time outside can boost your well-being, and a covered patio allows you to enjoy the benefits year-round.

### 5 NATURAL BOOST

The positive impacts of natural light are many. Extra windows can make a difference in how your home feels day-to-day.



Renderings, floor plans, options, and variations on all pages are computer generated. Actual construction may vary. Pricing, dimensions, exteriors and specifications are subject to change, and depend on construction timelines. Ask your sales consultant for more information.



**3**  
BED



**2.5**  
BATH



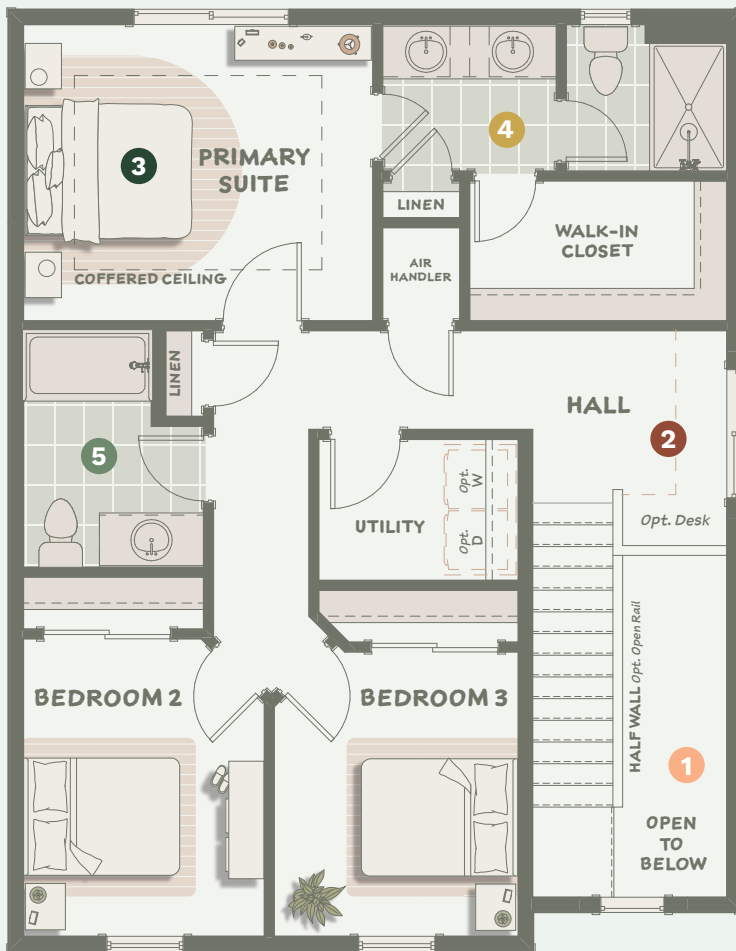
**2-Car**  
GARAGE



**2**  
FLOORS



## Upper Level



### 1 OPEN AND AIRY

A 2-story entry floods the home with natural light. Upstairs, a half wall enhances the sense of space by allowing light to flow seamlessly through the hallway.

### 2 FUNCTIONAL DIFFERENCE

This hall features a spacious landing designed with just the right proportions to offer a little extra utility. Its shape works well for a compact workspace, a cozy reading nook, or furniture with added storage—all while benefiting from natural light. Ask your Sales Consultant for more details.

### 3 PEACE AND PURPOSE

Coffered ceilings are popular for their visual depth, but did you know they can also help with acoustics by absorbing sound? The effect is a calmer space which aids in relaxation.

### 4 PERSONAL SPACE

A thoughtful partition wall in the primary bath creates two distinct zones, making it easier for independent morning routines. A window brings in fresh air and natural light, while the built-in linen closet keeps everyday essentials close at hand.

### 5 SPACIOUS EASE

There's a lot to love about this spacious secondary bath. Just outside, a linen closet is great for storing fluffy towels and other essentials.

## WHAT IS LIFEMADE?

Lifemade™ draws on real homeowner data and insights to guide every design and construction decision, ensuring that each home is thoughtfully crafted to be the happiest place in the world.

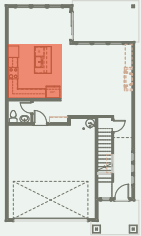
**lifemade**<sup>™</sup>  
homes built for **happiness**<sup>™</sup>

# The 1632 Variations

CCB: 133921  
WAWI882ML

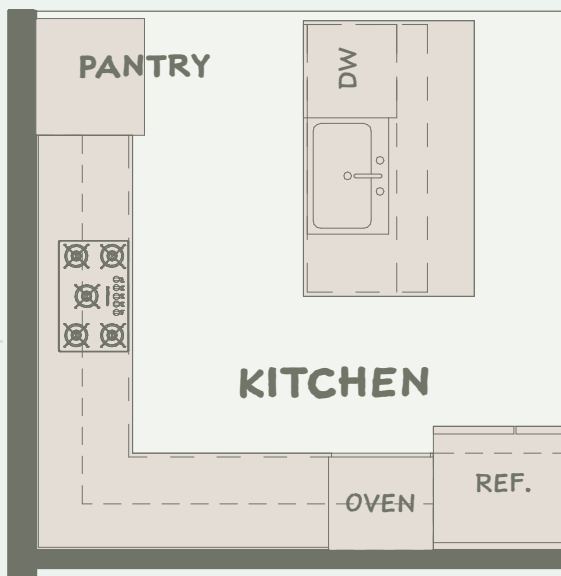


Some homes feature alternate configurations that provide variety across each plan. Depending on construction progress, your home may already include some of these features. We'll help you explore what's available and guide you to a home that suits your needs and timeline.



## A CHEF'S KITCHEN

### Gourmet Kitchen



onlinesales@holthomes.com  
971.252.5262  
HOLTHOMES.COM