

The 2299 Floor Plan.

HOLTHOMES
Built for the Pacific Northwest



Elevation A



Elevation C



Elevation D



SQUARE FEET:

2,299



STORIES:

2



BEDROOMS:

3-4



BATHS:

2.5



GARAGE CAPACITY:

3

HOLT HOMES

Built for the Pacific Northwest



SQUARE FEET: **2,299**



STORIES: **2**



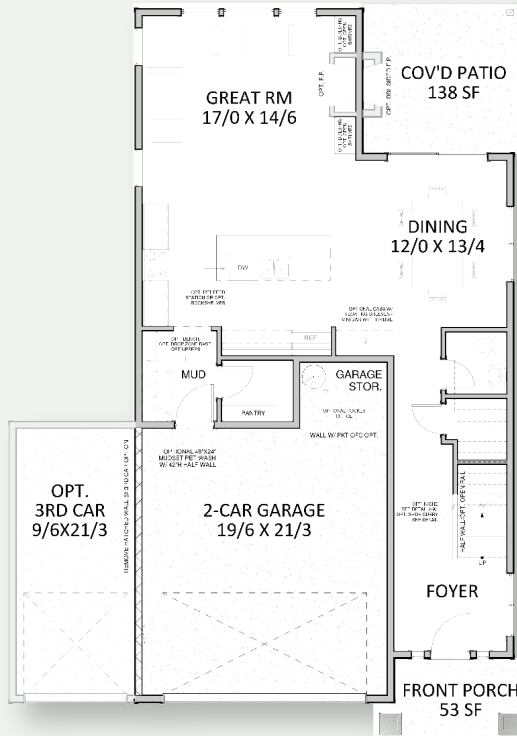
BEDROOMS: **3-4**



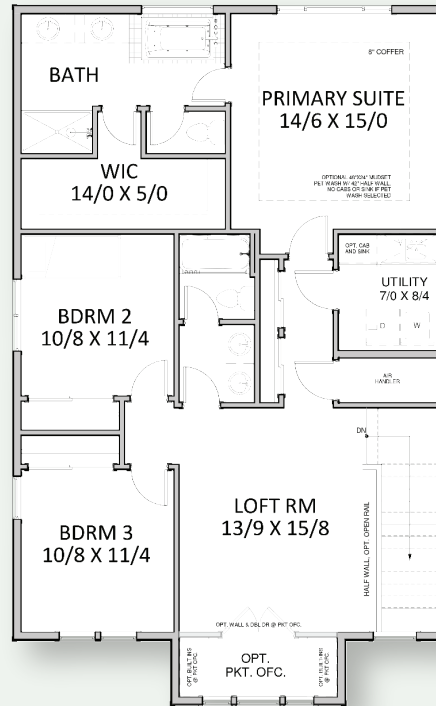
BATHS: **2.5**



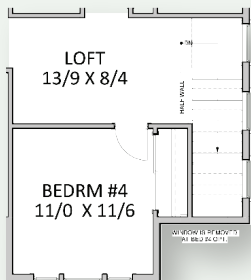
GARAGE CAPACITY: **3**



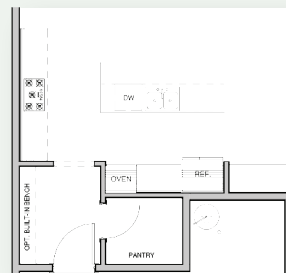
MAIN LEVEL



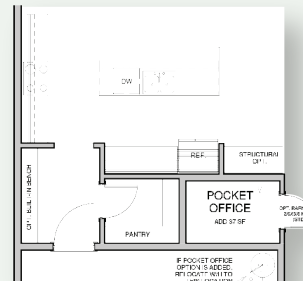
UPPER LEVEL



OPT 4TH BEDROOM



OPT GOURMET KITCHEN



OPT POCKET OFFICE

Floor plans are computer generated and actual construction may vary. Pricing, dimensions, exteriors and specifications are subject to change. Plans and finishes vary from one community to another. Ask your sales agent for more information.

CCB: 133921
WAWI882ML

To learn more about this floor plan please visit our website holthomes.com/floorplans.

