

The 2618 Floor Plan.

HOLTHOMES
Built for the Pacific Northwest



Elevation A



Elevation C



Elevation D



SQUARE FEET:

2,618



STORIES:

2



BEDROOMS:

4-5



BATHS:

4

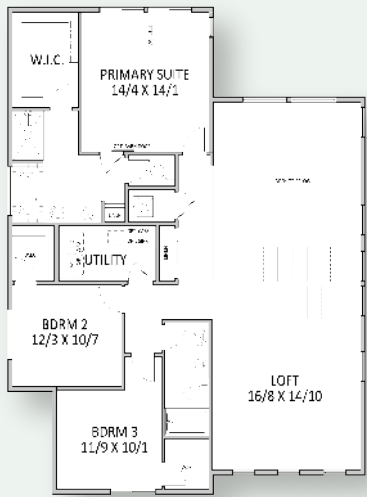


GARAGE CAPACITY:

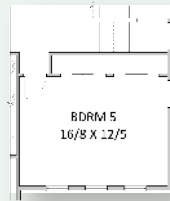
3

HOLTHOMES

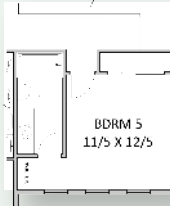
Built for the Pacific Northwest



UPPER LEVEL



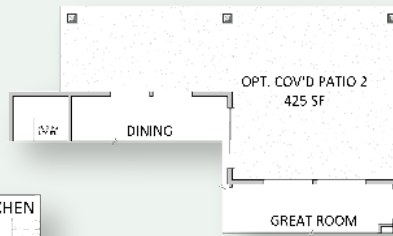
OPT 5TH BEDROOM



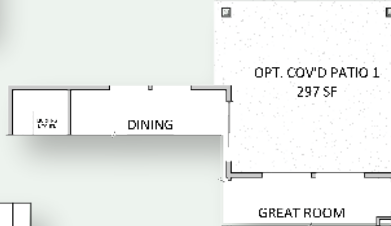
OPT 5TH BEDROOM W/ ENSUITE



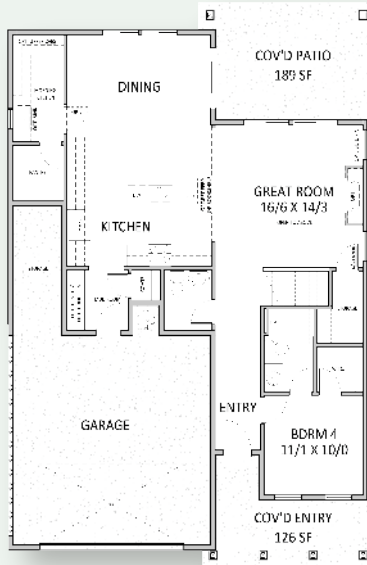
OPT CLOSET



OPT COV'D PATIO 2



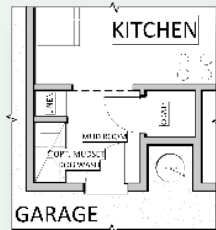
OPT COV'D PATIO 1



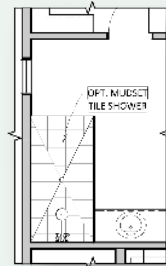
MAIN LEVEL



OPT PET AREA



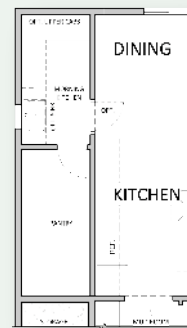
OPT PET WASH



OPT SUPER SHOWER



OPT FREESTANDING TUB



OPT EXTENDED PANTRY



SQUARE FEET:

2,618



STORIES:

2



BEDROOMS:

4-5



BATHS:

4



GARAGE CAPACITY:

3

Floor plans are computer generated and actual construction may vary. Pricing, dimensions, exteriors and specifications are subject to change. Plans and finishes vary from one community to another. Ask your sales agent for more information.

CCB: 133921
WAWI882ML

To learn more about this floor plan please visit our website holthomes.com/floorplans.

