

The 3967 Floor Plan.

HOLTHOMES
Built for the Pacific Northwest



Elevation B



Elevation C



SQUARE FEET:

3,967



STORIES:

2



BEDROOMS:

4



BATHS:

3.5

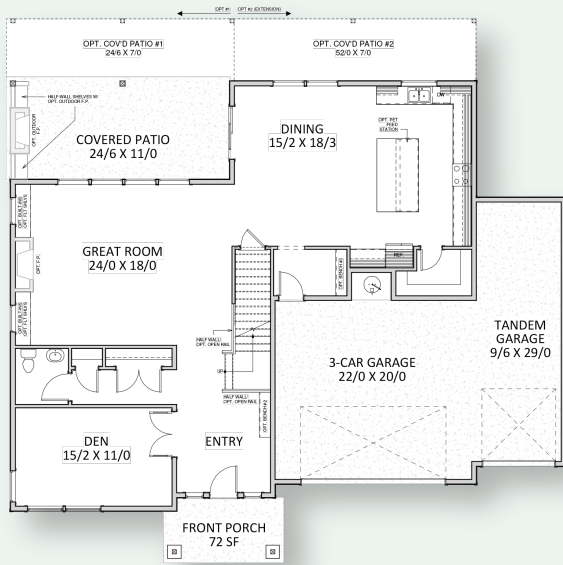


GARAGE CAPACITY:

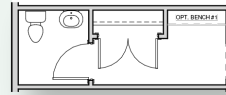
3

HOLTHOMES

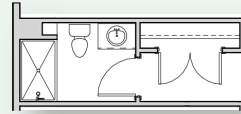
Built for the Pacific Northwest



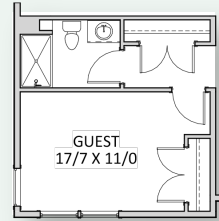
MAIN LEVEL



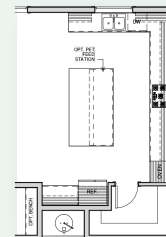
OPT. BENCH IN LIEU OF LINEN



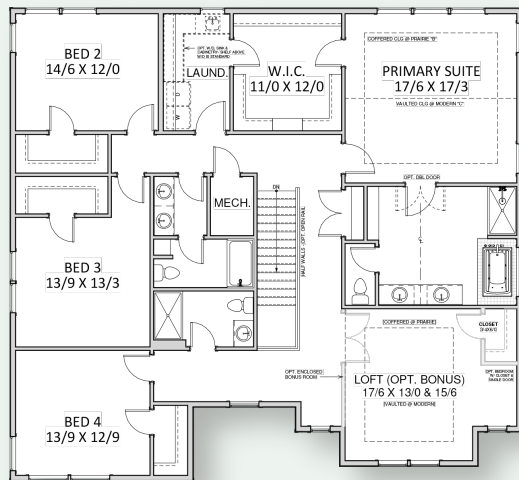
OPT. FULL BATH IN LIEU OF POWDER



OPT. FULL BATH IN LIEU OF DEN



OPT. GOURMET KITCHEN



UPPER LEVEL



SQUARE FEET:

3,967



STORIES:

2



BEDROOMS:

4



BATHS:

3.5



GARAGE CAPACITY:

3

Floor plans are computer generated and actual construction may vary. Pricing, dimensions, exteriors and specifications are subject to change. Plans and finishes vary from one community to another. Ask your sales agent for more information.

CCB: 133921
WAWI882ML

To learn more about this floor plan please visit our website holthomes.com/floorplans.

