

The 3967 Floor Plan.

HOLTHOMES
Built for the Pacific Northwest



Elevation B



Elevation C



SQUARE FEET:

3,967



STORIES:

2



BEDROOMS:

4-5



BATHS:

3.5



GARAGE CAPACITY:

3

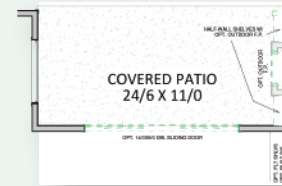
HOLTHOMES

Built for the Pacific Northwest



MAIN LEVEL

OPT. BEDROOM & FULL BATH
IN LIEU OF DEN/POWDER

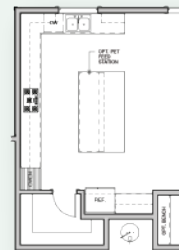


OPT. GREAT ROOM
SLIDING DOOR



SQUARE
FEET:

3,967



OPT. GOURMET KITCHEN



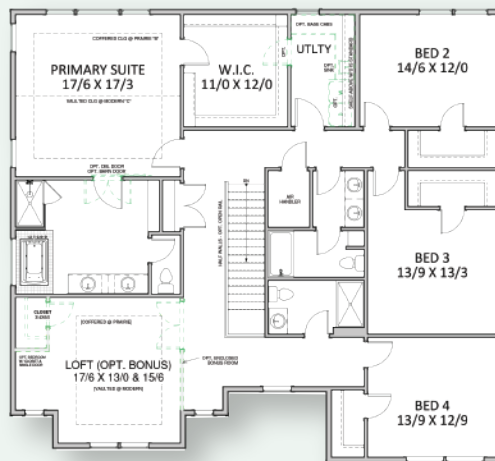
OPT. BENCH IN LIEU OF LINEN



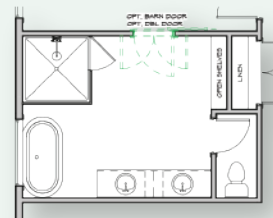
STORIES: **2**



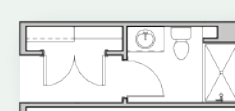
BEDROOMS: **4-5**



UPPER LEVEL



OPT. MUDSET SHOWER



OPT. FULL BATH
IN LIEU OF POWDER



BATHS: **3.5**



GARAGE
CAPACITY: **3**

Floor plans are computer generated and actual construction may vary. Pricing, dimensions, exteriors and specifications are subject to change. Plans and finishes vary from one community to another. Ask your sales agent for more information.

CCB: 133921
WAWI882ML

To learn more about this floor plan please visit our website holthomes.com/floorplans.

