

The 3297 Floor Plan.

HOLTHOMES
Built for the Pacific Northwest



Elevation A



Elevation B



Elevation C



SQUARE FEET:

3,297



STORIES:

2



BEDROOMS:

4-5



BATHS:

3.5

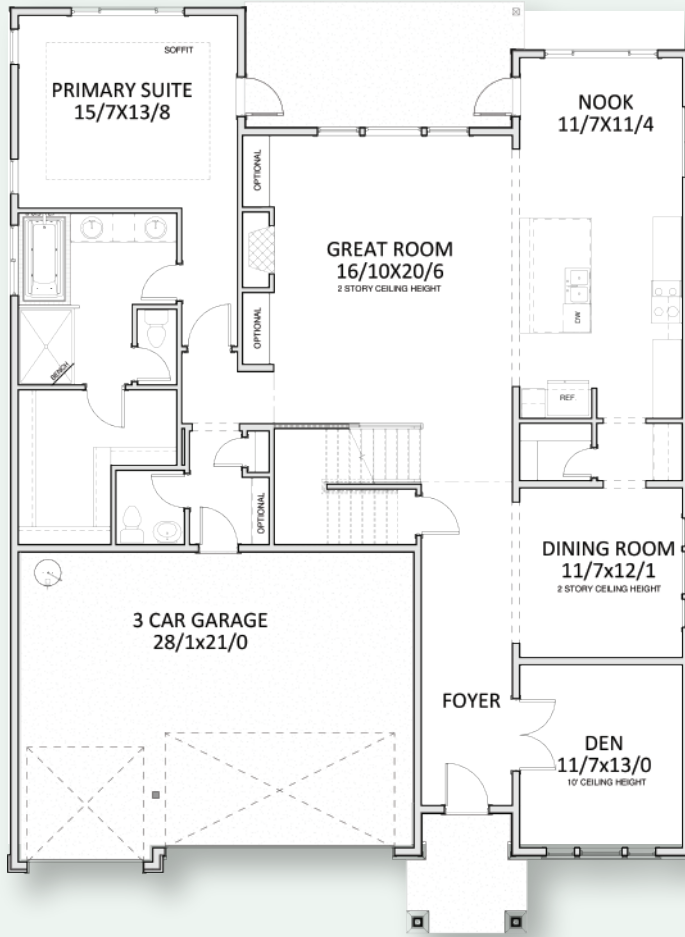


GARAGE CAPACITY:

3

HOLTHOMES

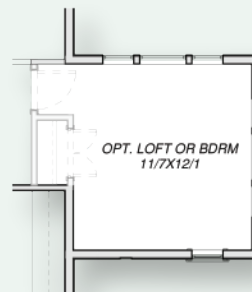
Built for the Pacific Northwest



MAIN FLOOR



UPPER FLOOR



OPT. LOFT/BDRM



SQUARE
FEET:

3,297



STORIES:

2



BEDROOMS:

4-5



BATHS:

3.5



GARAGE
CAPACITY:

3

Floor plans are computer generated and actual construction may vary. Pricing, dimensions, exteriors and specifications are subject to change. Plans and finishes vary from one community to another. Ask your sales agent for more information.

CCB: 133921
WAWI882ML

To learn more about this floor plan please visit our website holthomes.com/floorplans.

