

The 1987 Floor Plan.

HOLTHOMES
Built for the Pacific Northwest



SQUARE FEET:

1,987



STORIES:

2



BEDROOMS:

3-4



BATHS:

2.5

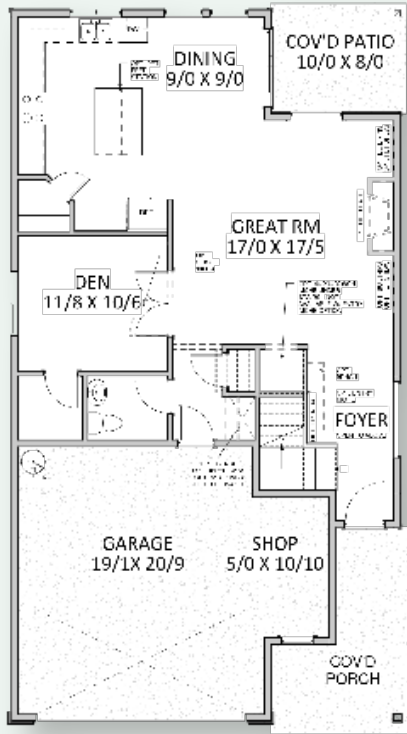


GARAGE CAPACITY:

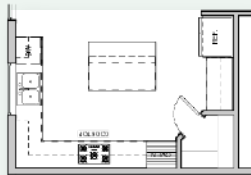
2

HOLTHOMES

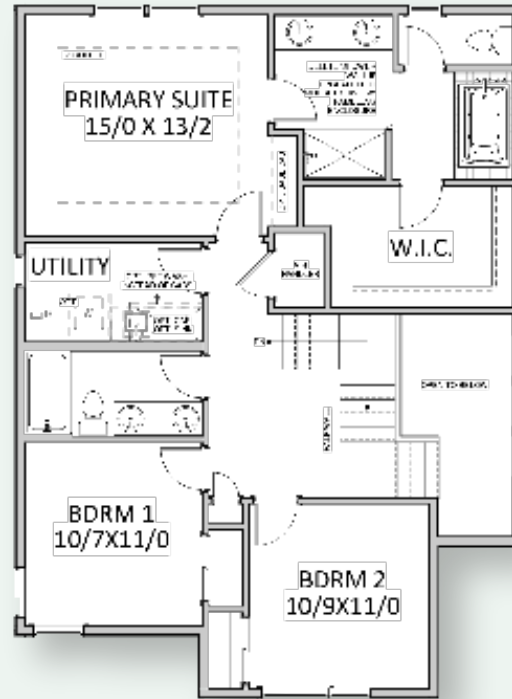
Built for the Pacific Northwest



MAIN LEVEL



OPT GOURMET KITCHEN



UPPER LEVEL



OPT BED W/ BATH IN LIEU OF DEN



SQUARE FEET: **1,987**



STORIES: **2**



BEDROOMS: **3-4**



BATHS: **2.5**



GARAGE CAPACITY: **2**

Floor plans are computer generated and actual construction may vary. Pricing, dimensions, exteriors and specifications are subject to change. Plans and finishes vary from one community to another. Ask your sales agent for more information.