

# The 3370 Floor Plan.

**HOLTHOMES**  
Built for the Pacific Northwest



**Elevation A**



**Elevation B**



SQUARE FEET:

**3,370**



STORIES:

**2**



BEDROOMS:

**4-5**



BATHS:

**3**



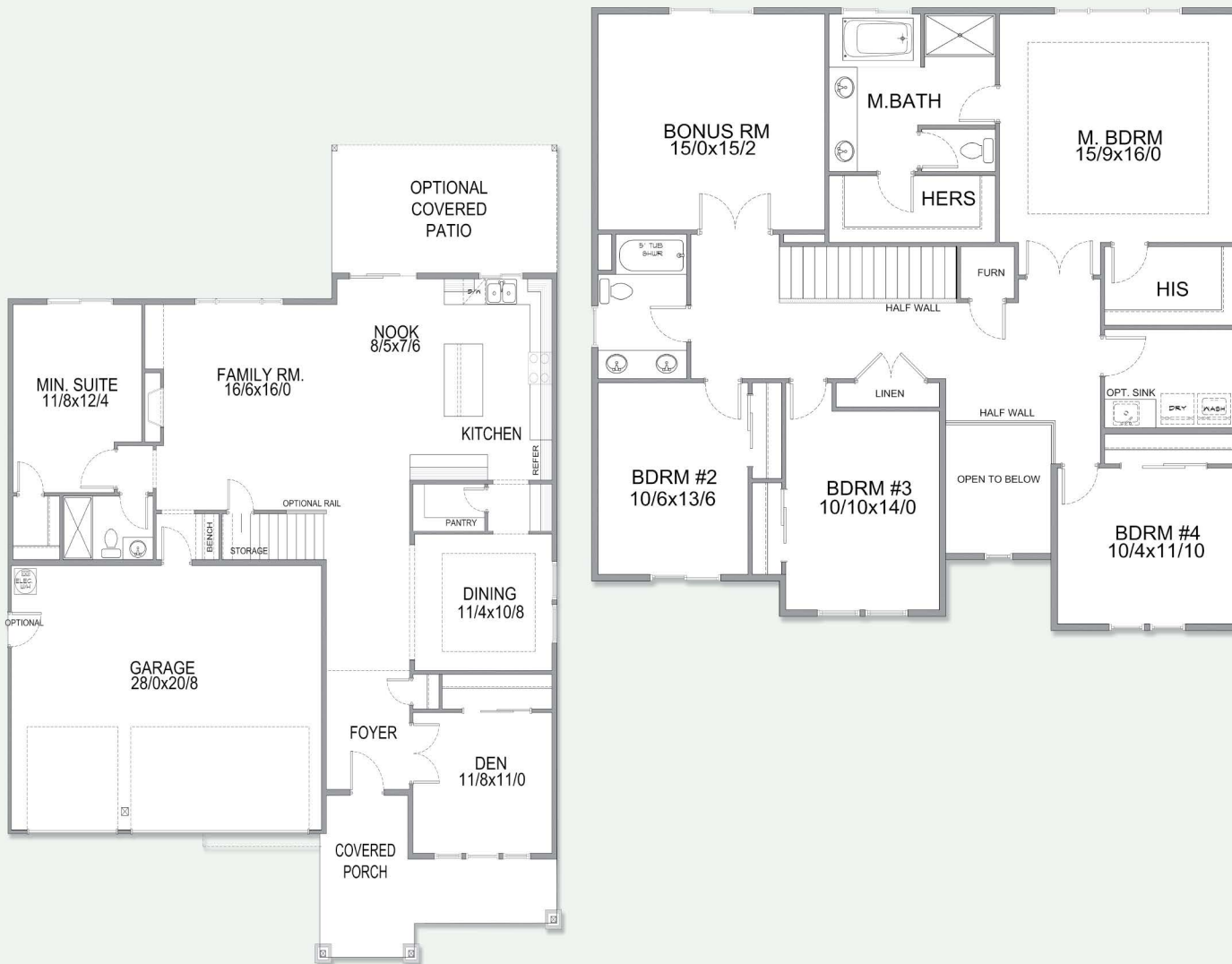
GARAGE CAPACITY:

**3**

FIND HOME: [holthomes.com/floorplans](https://holthomes.com/floorplans)

# HOLT HOMES

Built for the Pacific Northwest



SQUARE FEET: **3,370**



STORIES: **2**



BEDROOMS: **4-5**



BATHS: **3**



GARAGE CAPACITY: **3**

\*All floor plan specifications are subject to change without notice and should be verified with your Holt Representative prior to purchase.

CCB: 133921  
WAWI882ML

To learn more about this floor plan please visit our website [holthomes.com/floorplans](http://holthomes.com/floorplans).

