

The 2628 Floor Plan.

HOLTHOMES
Built for the Pacific Northwest



Elevation A



Elevation B



SQUARE FEET:

2,628



STORIES:

2



BEDROOMS:

3-5



BATHS:

2.5



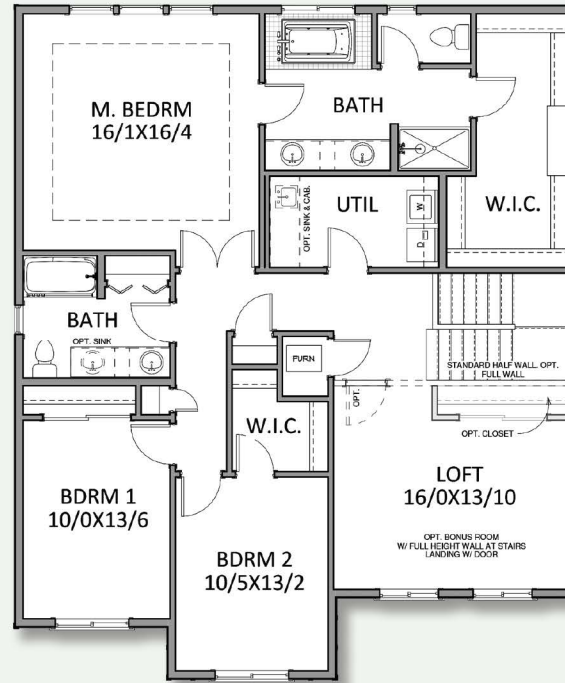
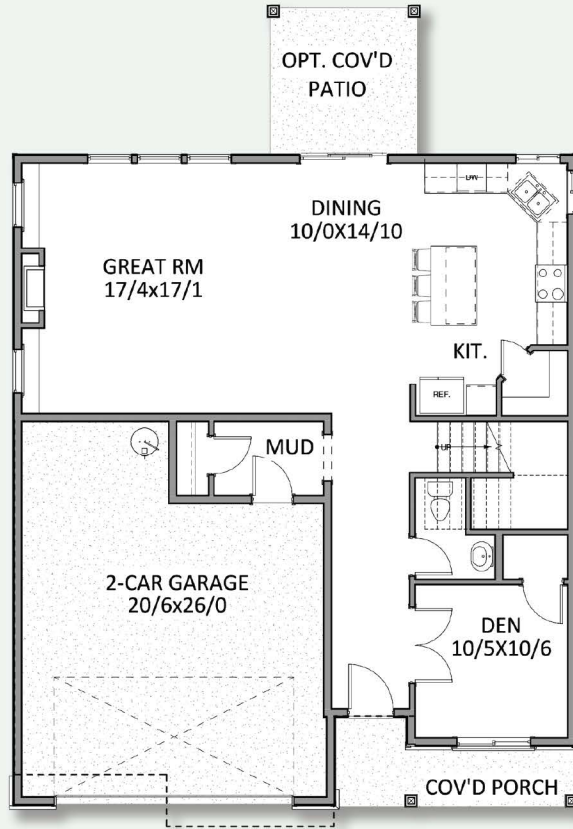
GARAGE CAPACITY:

2

FIND HOME: holthomes.com/floorplans

HOLT HOMES

Built for the Pacific Northwest



SQUARE FEET: **2,628**



STORIES: **2**



BEDROOMS: **3-5**



BATHS: **2.5**



GARAGE CAPACITY: **2**

*All floor plan specifications are subject to change without notice and should be verified with your Holt Representative prior to purchase.

CCB: 133921
WAWI882ML

To learn more about this floor plan please visit our website holthomes.com/floorplans.

 Equal Housing Opportunity