

The 2037 Floor Plan.

HOLTHOMES
Built for the Pacific Northwest



Elevation A



Elevation B



SQUARE FEET:

2,037



STORIES:

1.5



BEDROOMS:

3-4



BATHS:

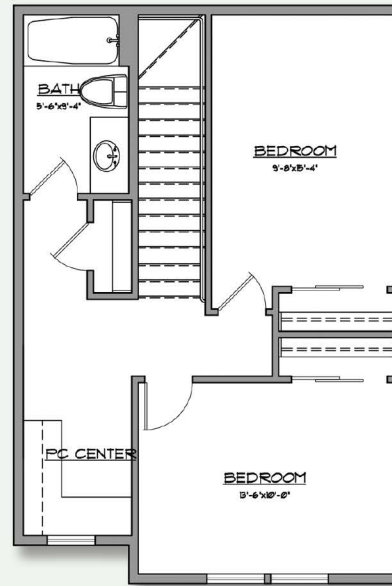
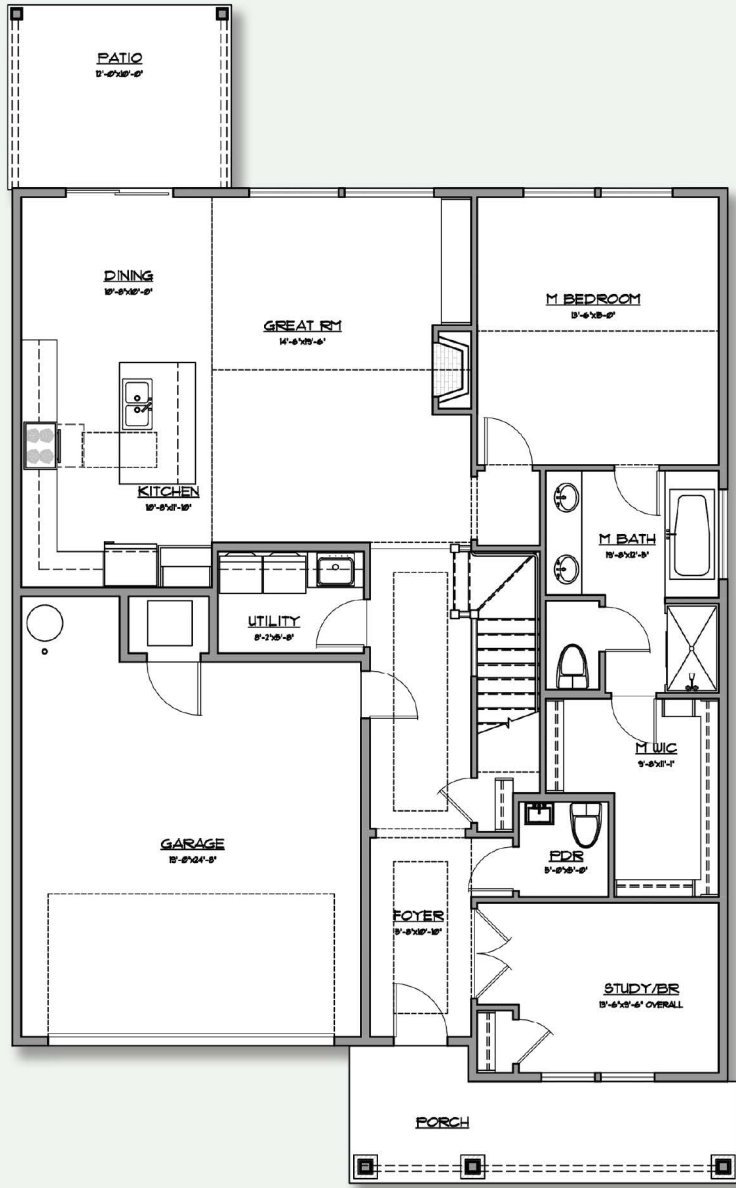
2.5



GARAGE CAPACITY:

2

FIND HOME: holthomes.com/floorplans



HOLT HOMES

Built for the Pacific Northwest



SQUARE FEET: **2,037**



STORIES: **1.5**



BEDROOMS: **3-4**



BATHS: **2.5**



GARAGE CAPACITY: **2**

*All floor plan specifications are subject to change without notice and should be verified with your Holt Representative prior to purchase.

CCB: 133921
WAW1882ML

To learn more about this floor plan please visit our website holthomes.com/floorplans.



Equal Housing Opportunity