

# The 1690 Floor Plan.

**HOLTHOMES**  
Built for the Pacific Northwest



**Elevation A**



**Elevation B**



SQUARE FEET:

**1,690**



STORIES:

**2**



BEDROOMS:

**3**



BATHS:

**2.5**



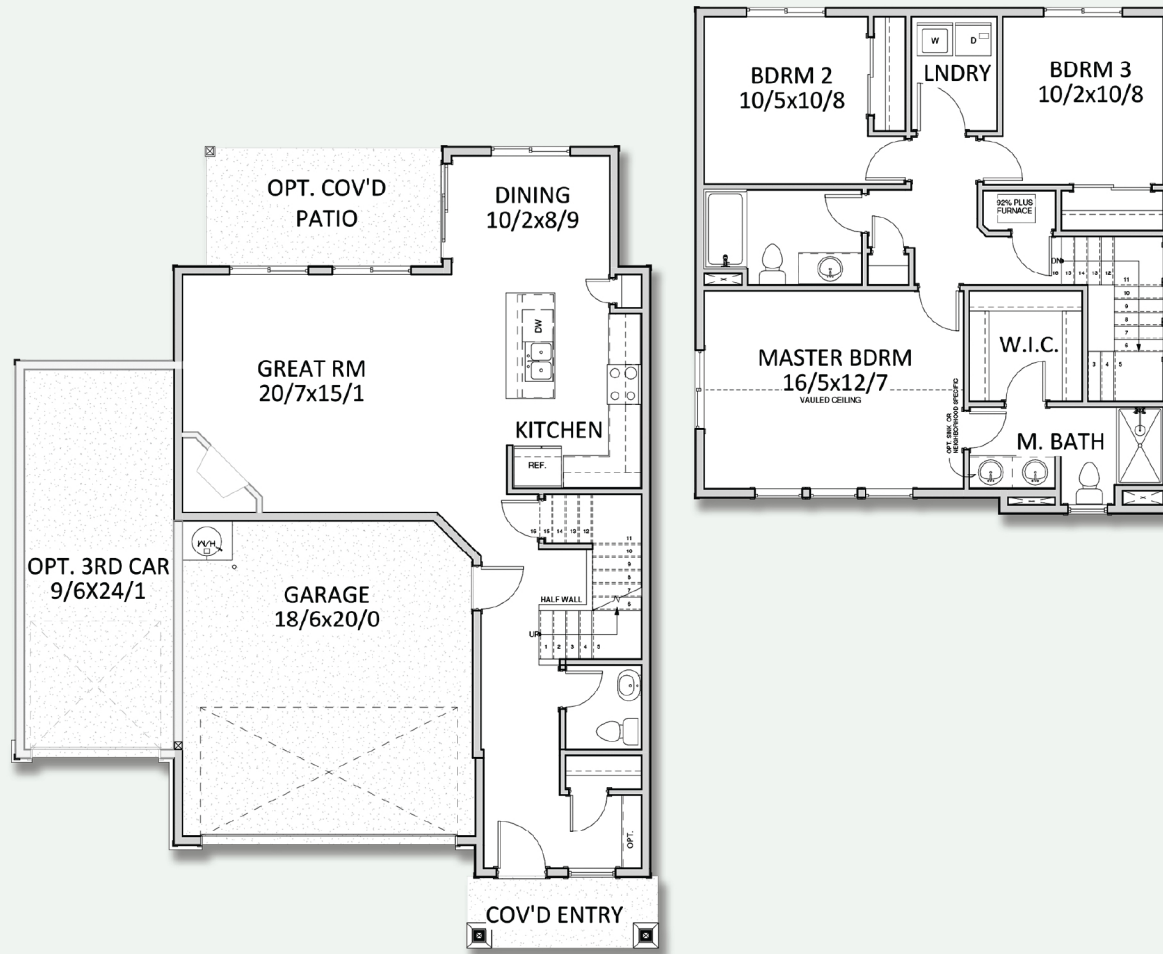
GARAGE CAPACITY:

**3**

FIND HOME: [holthomes.com/floorplans](https://holthomes.com/floorplans)

# HOLTHOMES

Built for the Pacific Northwest



SQUARE FEET: **1,690**



STORIES: **2**



BEDROOMS: **3**



BATHS: **2.5**



GARAGE CAPACITY: **3**

\*All floor plan specifications are subject to change without notice and should be verified with your Holt Representative prior to purchase.

CCB: 133921  
WAW1882ML

To learn more about this floor plan please visit our website [holthomes.com/floorplans](http://holthomes.com/floorplans).

