

# The 1579 Floor Plan.

**HOLTHOMES**  
Built for the Pacific Northwest



**Elevation A**



**Elevation B**



**Elevation C**



SQUARE FEET:

**1,579**



STORIES:

**2**



BEDROOMS:

**3**



BATHS:

**2.5**



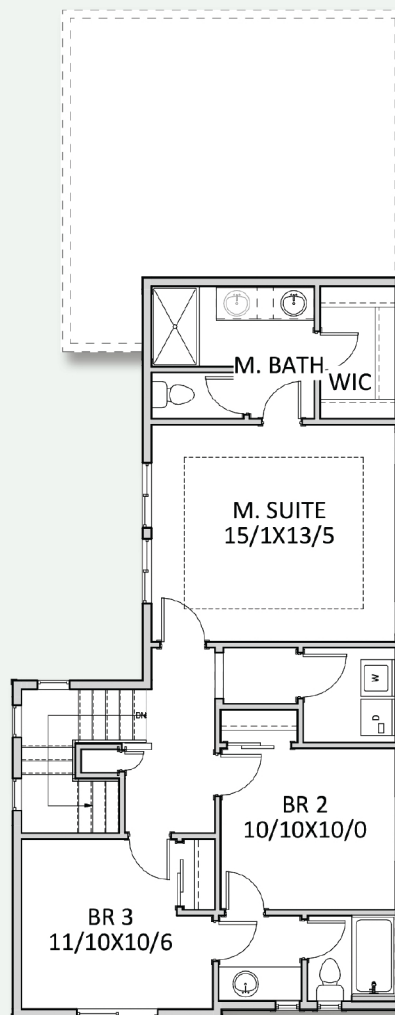
GARAGE CAPACITY:

**2**

**FIND HOME:** [holthomes.com/floorplans](https://holthomes.com/floorplans)

# HOLT HOMES

Built for the Pacific Northwest



SQUARE  
FEET:

**1,579**



STORIES: **2**



BEDROOMS: **3**



BATHS: **2.5**



GARAGE  
CAPACITY: **2**

\*All floor plan specifications are subject to change without notice and should be verified with your Holt Representative prior to purchase.

CCB: 133921  
WAWI882ML

To learn more about this floor plan please visit our website [holthomes.com/floorplans](https://holthomes.com/floorplans).



Equal Housing  
Opportunity