

# The 2890 Floor Plan.

**HOLTHOMES**  
Built for the Pacific Northwest



**Elevation A**



**Elevation B**



**Elevation D**



SQUARE FEET:

**2,890**



STORIES:

**2**



BEDROOMS:

**5**



BATHS:

**3.5**



GARAGE CAPACITY:

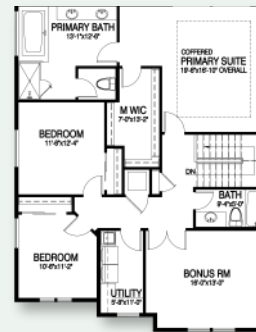
**3**

# HOLT HOMES

Built for the Pacific Northwest



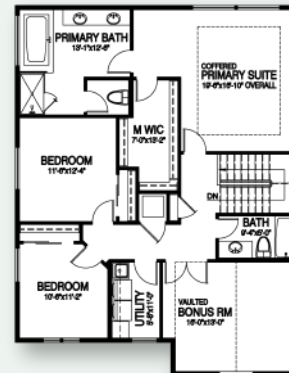
**MAIN LEVEL**  
(Elevation A&B)



**UPPER LEVEL**  
(Elevation A&B)



**MAIN LEVEL**  
(Elevation D)



**UPPER LEVEL**  
(Elevation D)



**SQUARE FEET: 2,890**



**STORIES: 2**



**BEDROOMS: 5**



**BATHS: 3.5**



**GARAGE CAPACITY: 3**

Floor plans are computer generated and actual construction may vary. Pricing, dimensions, exteriors and specifications are subject to change. Plans and finishes vary from one community to another. Ask your sales agent for more information.

CCB: 133921  
WAWI882ML

To learn more about this floor plan please visit our website [holthomes.com/floorplans](http://holthomes.com/floorplans).

