

The 2803 Floor Plan.

HOLTHOMES
Built for the Pacific Northwest



Elevation A



Elevation B



SQUARE FEET:

2,803



STORIES:

2.5



BEDROOMS:

3



BATHS:

2.5



GARAGE CAPACITY:

2

FIND HOME: holthomes.com/floorplans

HOLT HOMES

Built for the Pacific Northwest



SQUARE
FEET:

2,803



STORIES:

2.5



BEDROOMS:

3



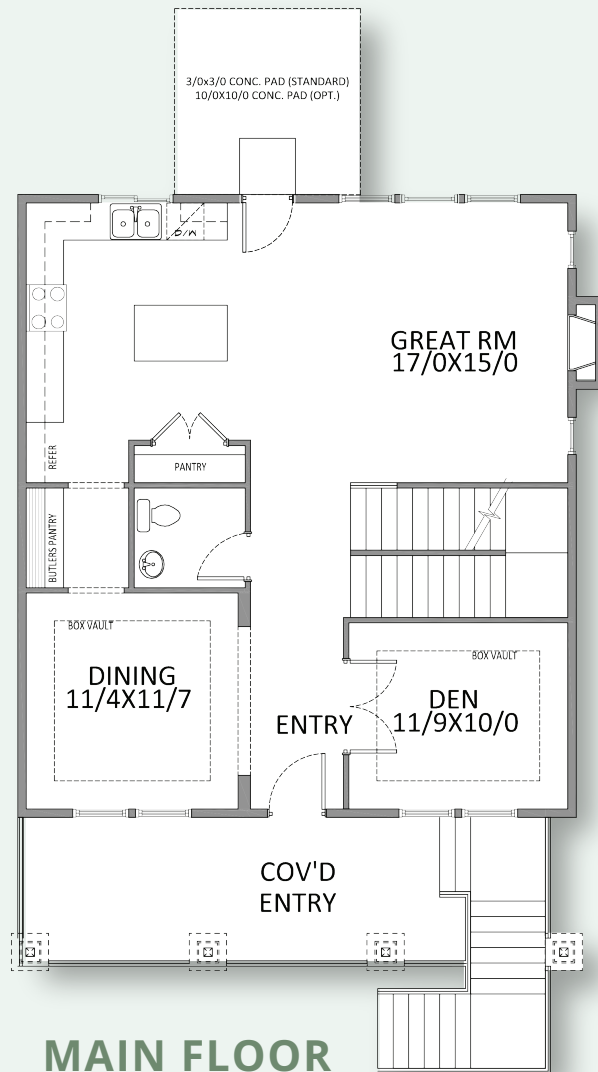
BATHS:

2.5

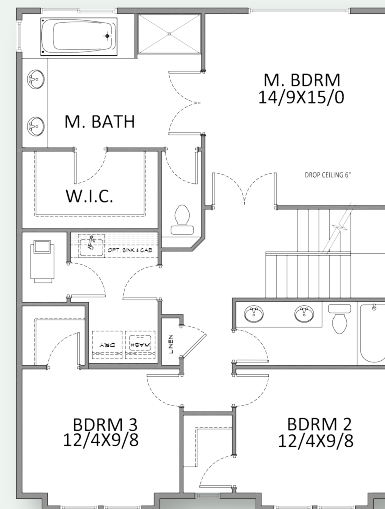


GARAGE
CAPACITY:

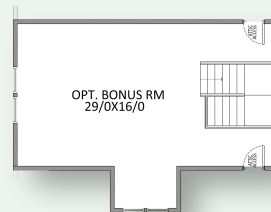
2



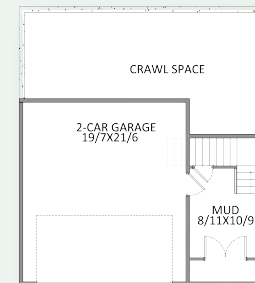
MAIN FLOOR



SECOND FLOOR



ATTIC FLOOR



GARAGE FLOOR

Floor plans are computer generated and actual construction may vary. Pricing, dimensions, exteriors and specifications are subject to change.
Plans and finishes vary from one community to another. Ask your sales agent for more information.

CCB: 133921
WAWI882ML

To learn more about this floor plan please visit our website holthomes.com/floorplans.

